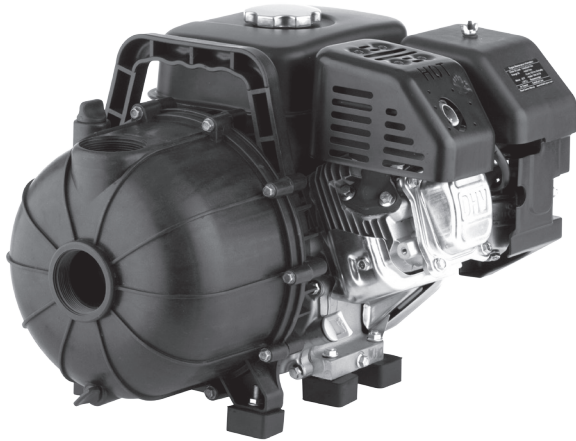


Gas Driven Poly Pump FPG-2 196 cc

BOOK: GES-025
DATE: May 1, 2013



Specifications:

Capacities: to 150 gpm

Heads: to 140 feet

Temperature: 77 °F max

Rotation: clockwise viewed from motor end

Pipe Connections: NPT

Power	Discharge	Suction
196 cc	2"	2"

Features:

- **Volute:** Polypropylene corrosion resistant casing
- **Impeller:** Polypropylene construction
- **Seal:** Carbon/ceramic with EPDM elastomers (ethylene propylene diene monomer)
- **Diffuser:** Polypropylene construction
- **Gaskets:** EPDM elastomers (ethylene propylene diene monomer)
- Self-priming to 25 feet of suction lift
- Integrated check valve

Engine Features:

- 196 cc gasoline Kohler Courage engine
- 3600 rpm operation
- Recoil type ignition
- EPA certified

Applications:

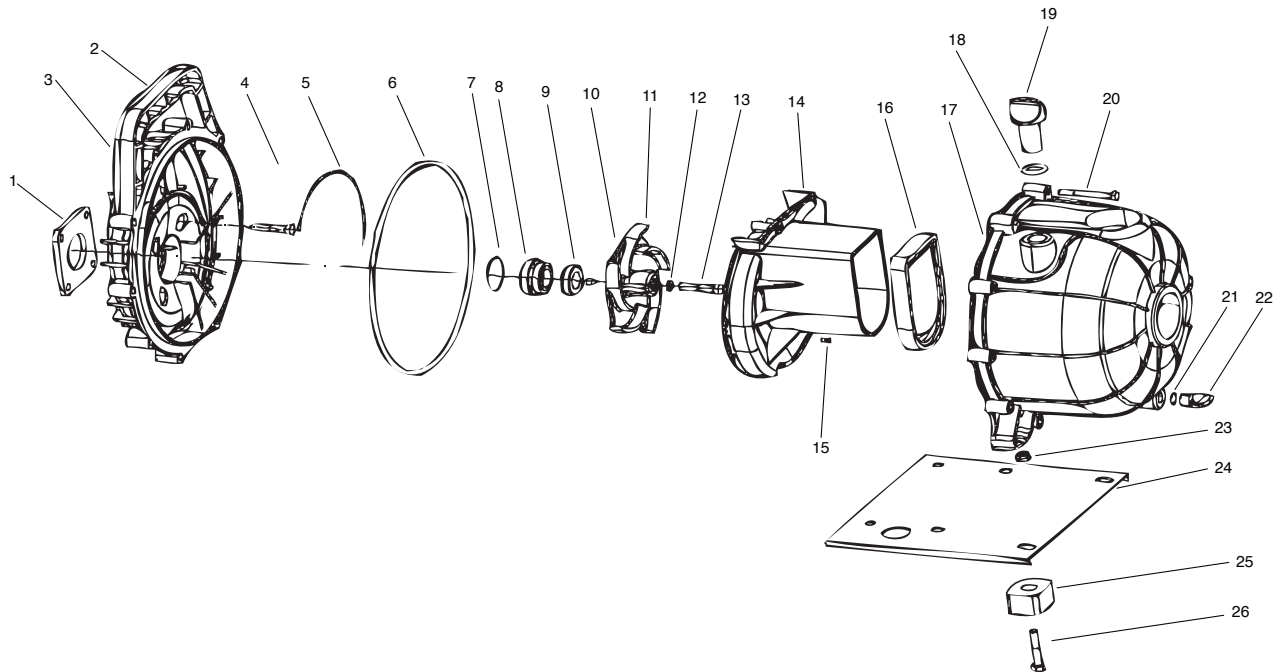
- Agriculture
- General Purpose
- Utility
- Water Transfer
- Flood Control

Gas Driven Poly Pump FPG-2 196 cc

Ordering Information:

Model	Item Number	cc	Intake	Discharge	Suction Lift	Max Pressure PSI	Max Flow GPM	Fuel Tank (qt)	Engine	Shipping Wt.
FPG-2	617081	196cc	2" NPT	2" NPT	25'	61	195 GPM	3.8	Kohler Courage (196cc)	50 lb.

Exploded Parts Drawing:



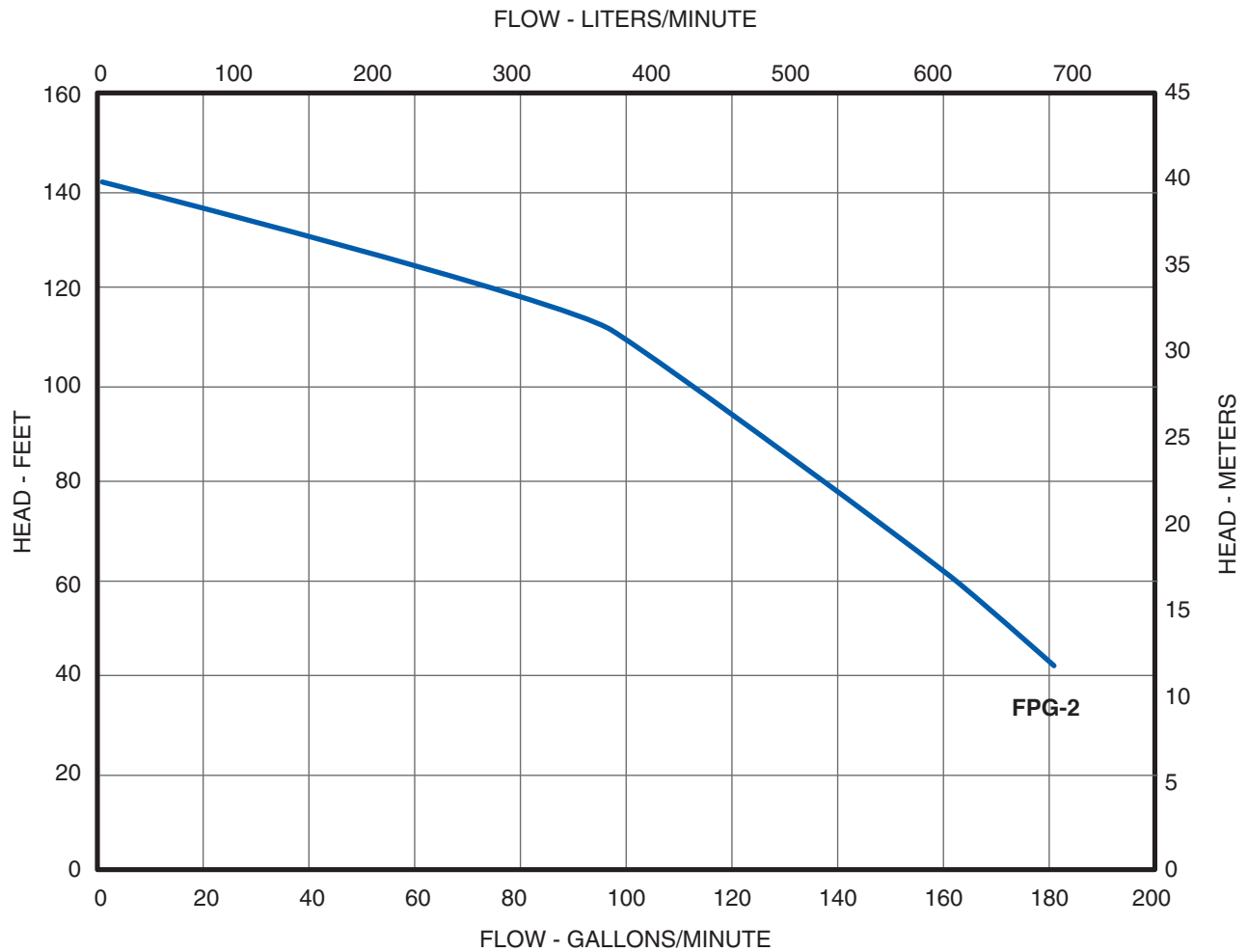
Parts Only

Figure No.	Description	Repair No.
1, 2, 3, 4	Bracket Kit	617150
5, 6, 7, 8, 9	Seal Kit	617151
10, 11, 12, 13	Impeller Kit	617152
14, 15	Volute	617153
16	Check Valve	617154
18, 19, 21, 22	Plug Kit	617155
17, 20	Casing Kit	617156
23, 24, 25, 26	Base Kit	617157

Gas Driven Poly Pump FPG-2 196 cc

Performance Curve:

3600 rpm
Nominal





Franklin Electric

9255 Coverdale Road, Fort Wayne, IN 46809
Tel: 260.824.2900 Fax: 260.824.2909
www.franklinwater.com